

Installation Instructions: BONDED

1 GENERAL

ReadyRazzo® Tiles are recommended for indoor use only and must be installed by professional flooring installers, experienced with installing commercial resilient floorcovering products. Installers must have sufficient professional liability insurance coverage (aka: Errors and Omissions Insurance) for the project.

Training programs such as the International Standards & Training Alliance (INSTALL) The International Certified Floorcovering Installers Association (CFI), and Flooring American University are recommended. If this is the first time installing ReadyRazzo® Tiles or if it has been more than one calendar year since a successful installation of 500 square feet or more, please call Summit International Flooring at 1-877-496-3566 to review the installation parameters.

These have been developed to offer the best opportunity for proper and successful flooring installations and any deviation may result in failure. Installation instructions, all Safety Data Sheets (SDS), and label instructions must be read, fully understood, and followed. For all situations that are not covered in this document, please contact Summit International Flooring immediately before moving forward with the installation.

Unless stated otherwise, follow the specific requirements of *ASTM F710 – Standard Practice for Preparing Concrete Floors to Receive Resilient Flooring*. Please visit www.astm.org for copies of any ASTM document.

The General Contractor (or Owner) must provide a structurally sound subfloor; new concrete slabs must conform to *ASTM C33/C33M — Standard Specification for Concrete Aggregate*. When concrete slabs have or are suspected of having Alkali Silica Reaction (ASR) present, do not proceed and contact Summit International Flooring.

All on and below grade concrete subfloors require a confirmed effective vapor retarder. The vapor retarder must have a low permeance (≤ 0.1), having a minimum thickness of 10 mils, or it must meet *ASTM E1745 requirements — Standard Specification for Water Vapor Retarders Used in Contact with Soil or Granular Fill under Concrete Slabs*. Confirm it was placed directly underneath the concrete, above the granular fill. If this is not possible, use a topically applied moisture mitigation system that conforms to *ASTM F3010 – Standard Practice for Two-Component Resin Based Membrane-Forming Moisture Mitigation Systems for Use Under Resilient Floor Coverings*. It must be applied following the manufacturers written instructions.

Note: Typically these will require a leveling compound applied over the membrane to provide an absorptive (porous) substrate. Chemical adhesive removers must not be used. Do not install where hydrostatic pressure can occur. Also, the concrete subfloors must not be subject to shrinking, curling, cracking or moving in any way. Summit International Flooring accepts no liability for a failure or complaint due to slab movement of any kind.

ReadyRazzo® Tiles may be installed on radiant heated slabs, providing the maximum temperature of the surface of the slab does not exceed 85°F under any condition of use. The radiant heating system must be lowered or turned off for at least 48 hours before installation of the flooring material to allow proper adhesion of the adhesive to the subfloor. The room temperature must be maintained at a minimum of 65°F for 48 hours prior, during and at least 72 hours after installation. Then the temperature of the radiant heating system can be increased gradually so that the substrate and the flooring material can adapt to the temperature change together. A rapid change could result in thermal shock and de-bonding.

2 INSTALLATION TOOLS CHECKLIST

Make sure that the tools checklist has been reviewed in advance of any training and/or installation and all required equipment has been obtained ahead of time. **Note:** The complete tool list would be specific to the type of installation and the finish selected for the project. Below is intended to be the minimum requirements for any type of installation.

- Personal Protection Equipment (PPE): Dust mask, gloves, safety glasses, booties, suit, etc.
- Mop and bucket, with wringer
- 3" Diamond Lippage Plates (120 Grit)
- 3" Diamond Polishing Pads (120 grit)
- 3" Diamond Encrusted Pads
- 17" Diamond Encrusted Pads
- Wet/dry vacuum. Dry vacuum must meet Hepa requirements under Table 1 for Osha Silica Standards
- White cotton rags and mineral spirits
- Wet saw or dry saw with appropriate Hepa Vacuum
- Metabo or comparable variable speed hand-polisher for polishing edges
- Angle grinder with wet blade cutting kit or dry cutting kit attached with Hepa vacuum
- Continuous-rim diamond blade
- 100 lb. floor roller
- 1/16" square notch adhesive trowels
- Mobile workbench (folding)
- 10' and 8' straight edges
- Heat gun
- Hand roller and wall roller
- Razor scraper & blades
- Hammer, knife and blades
- Green FROGTAPE
- Cap snips
- Suction cups to lift tile
- Color coordinated silicone caulk
- Caulking gun
- Extension cords
- Micro-fiber flat mops
- Polyethylene sheets
- Fox tail / rat tail brush
- 17" Mastercraft, quarry master buffer with water tank and 40 – 50 lb. weights
- 17" flexible Velcro drive head
- Large trash bags
- Stand-up squeegee
- Lint-free, microfiber roller
- 1/16 tile spacers or
- Denatured alcohol

3 MOISTURE TESTING AND ADHESIVE

Moisture testing is mandatory following the protocol of *ASTM F2170 – Standard Test Method for Determining Relative Humidity in Concrete Slabs using in situ Probes*, regardless of grade level or whether the concrete is freshly poured or classified as an older slab. It is the responsibility of the General Contractor/End User to have the concrete subfloor tested for moisture. It is the responsibility of the Flooring Contractor to request the moisture test results prior to installing the flooring or they may wish to perform the testing themselves. The Wagner Rapid RH 4.0 System for testing RH provides certified results when following testing instructions for proper depth of concrete substrate. If test results are questioned it is also recommended that an International Concrete Repair Institute (ICRI) Tier 2 Certified Technician performs the moisture testing. If for any reason you are unable to drill into the subfloor, contact Summit International Flooring for guidance/assistance.

The test results must not exceed the maximum acceptable relative humidity for the adhesive. If test results exceed the maximum relative humidity, the installation must not proceed until either the subfloor dries to an acceptable level or an effective mitigation system is installed that conforms to *ASTM F3010* following the manufacturers written instructions.

Test methodology, results, and photographs must be documented and provided to the flooring contractor, general contractor, owner and/or architect. Providing the *ASTM F2170* test results are acceptable, the installation may proceed.

Acceptable Adhesive: Always follow the manufacturer's instructions and SDS.

Mapei Ultra Bond Eco 373 or Eco MS4

ASTM F 2170 ≤ 90% RH

Coverage is 125 to 185 sq. ft. / gallon

1/16 by 1/16 by 1/16 square notch trowel

Note: pH testing is required. Do not install if pH is 12 or greater. If a calcium chloride test (ASTM 1869) is performed do not install when the moisture vapor emission rate exceeds 8 pounds per 24 hours.

4 HANDLING AND STORAGE

If packaging is damaged, take photos and mark shipping documents as such before signing for the shipment. Contact shipper and/or Summit International Flooring and report the damage. Handle ReadyRazzo® with care as tiles can be broken if not handled properly. If material is distorted or otherwise damaged during storage or transportation, do not install it.

Great care is taken to properly label and inspect materials for defects at all phases of manufacturing and handling by Summit International Flooring. However, in the rare case where the wrong product or material with visible defects is shipped, these products must not be installed. Careful inspection of the product before installing is the responsibility of the flooring contractor. Installation of the product denotes acceptance of the product. Summit International Flooring will not honor any warranty complaints for materials installed in the wrong color with visible defects or other damage.

Upon receipt of the flooring at the project, immediately remove from the pallet in the properly conditioned area. Do not stack pallets. ReadyRazzo® Tiles are a flexible product that conforms to the substrate beneath it, therefore it requires special attention to handling and storage. Stack the ReadyRazzo® Tiles, walking side facing up, in 3-inch high stacks (maximum), on a hard and smooth substrate, keeping the tiles both flat and parallel in the pre-acclimatized area for a minimum period of 72 hours.

Protect all materials and maintenance products from extremes of temperature during storage, like ones that might be experienced in a trailer, storage container, etc. In the event that material must be stored on pallets for more than 45 days prior to commencement of installation, the tiles might need to be returned to the manufacturing facility for reconditioning. Please contact Summit International Flooring for guidance in these cases.

5 SITE CONDITIONS

Areas must be enclosed, weather tight, and properly conditioned at a constant ($\pm 5^{\circ}\text{F}$) service temperature that is between 60°F and 80°F with an ambient relative humidity between 35% - 65% for a minimum of 72 hours prior to commencement of installation, during the installation, and 96 hours after the installation.

The substrate surface must be at least 5°F above dew point. Example: If the ambient conditions are 70°F and 65% RH, the dew point is then 57°F and you must not proceed unless the surface temperature is at a minimum of 62°F . Dew point calculators are available online.

Note: If a system other than a permanent HVAC system is utilized, it must provide constant temperature and humidity control at specified levels for the specified time frame. Never force dry adhesives or patching compounds by using fans.

Areas of the flooring subjected to direct sunlight - through doors and windows, for example - must be covered using blinds, curtains, cardboard, or similar materials for 24 hours before, during, and for a period of 72 hours after the installation to allow the adhesive to cure.

6 SUBSTRATE PREPARATION

When cleaning the substrate, use only dustless vacuum cleaners to remove all dirt and debris.

6.1 Concrete Subfloors:

All subfloors must be absorptive, permanently dry, clean, smooth and structurally sound per *ASTM F710 — Standard Practice for Preparing Concrete Floors to Receive Resilient Flooring*. Concrete subfloors must be free of dust, solvents, paint, wax, varnish, oil, grease, asphalt, old adhesives, and other extraneous materials that may interfere with the bond or void the warranty of the flooring. These must be completely removed by mechanical means only. Dustless diamond grinding is one method to remove contaminants and bond breakers, as it also helps to smooth the concrete. Any dry grinding must meet requirements under Table 1 for Osha Silica Standards.

It is the responsibility of the installing party to determine the suitability and porosity of the subfloor being covered. To determine if a subfloor is absorptive, perform the water droplet test.

- **Water Droplet Test:** When using Mapei Ultra Bond ECO 373 or ECO MS4 adhesive it is mandatory that the substrate be absorptive (porous) as detailed within *ASTM F710*. To determine this (after preparation), perform a water droplet test by applying a ~ dime size droplet of potable water using a clean straw or similar to the prepared surface. The water must absorb into the substrate within 15 minutes to be considered absorptive (porous). **Note:** All leveling or patching compounds must be a minimum of 1/8th inch deep to both level properly and be considered absorptive.
- If the concrete is non-absorptive, polished or burnished, then mechanical preparation is required to open up the surface and make it absorptive. This can be achieved by shot-blasting, diamond grinding or using a DiamaBrush concrete prep plus tool, 100 or 25 grit on a rotary sanding machine with a suitable dust control system in place.
- **Warnings:** All local, state and federal regulations must be followed. Do not sand, dry sweep, dry scrape, drill, saw, shot-blast or mechanically chip or pulverize existing resilient flooring, backing, lining felt, asphalt “cutback” adhesive or other adhesive. These products may contain asbestos fibers and/or crystalline silica. Avoid creating dust. Inhalation of such dust is a cancer and respiratory tract hazard. Unless positively certain that the product is a non-asbestos containing material, presume it contains asbestos. Regulations may require that the material be tested to determine asbestos content. Various local, state, and federal government agencies have regulations governing the removal of in-place asbestos-containing material. If you contemplate the removal of a resilient floor covering structure that contains (or is presumed to contain) asbestos, all applicable regulations must be reviewed and complied with. Do not use any chemical adhesive removers. The RFCI’s (Resilient Floor Covering Institute) “Recommended Work Practices for Removal of Resilient Floor Coverings” is a defined set of instructions that addresses the task of removing all resilient floor-covering structures, including adhesive and adhesive residues. For more information, contact RFCI directly at www.rfci.com or 706-882-3833.
- **Note:** Occupational Safety and Health Administration (OSHA) has amended its existing standards for occupational exposure to respirable crystalline silica. OSHA has determined that people exposed to respirable crystalline silica at the previous permissible exposure limits face a significant risk of material impairment to their health. For more information visit <https://www.osha.gov/silica/>.
- ReadyRazzo® Tiles are a flexible product that conforms to the substrate beneath it, therefore it requires special attention to substrate preparation or the irregularities will mirror through the finished flooring. The requirement is the substrate must be both smooth (ridge-free) and with a minimum flatness tolerance of $\leq 1/8$ th inch over 10 feet.

Irregularities in the substrate must be repaired using only commercial grade self-leveling or patching compound that has a minimum compressive strength ≥ 3000 psi. All leveling compounds must be a minimum of 1/8th inch deep and be fully warranted by the manufacturer for the use of the project, including the moisture conditions, priming etc., following the manufacturers written instructions. When dry, sand the surface smooth using a 36 grit sanding disc, screen or similar on a single disc rotary machine with a suitable dust control and clean the floor.

No expansion joint or moving joint can be covered over or filled. Use a suitable industry standard expansion joint assembly system as required. Permanently dormant control joints and cracks must be properly cleaned out to remove all dirt and debris or contaminants and filled to a smooth finish using a suitable commercial grade self-leveling or patching compound, following the manufacturers written instructions.

- **Adhesive Test:** Perform an adhesive test away from your start lines (to be removed later). Apply ~1 SF of Mapei Ultrabond Eco 373 or Eco MS4 Adhesive using the notched trowel on the properly prepared substrate and record the “working time”. On porous substrate, ReadyRazzo® Tiles can be installed into semi-wet adhesive. It is important to monitor and record how long it takes for the adhesive to dry. This will determine how large an area to spread and lay ReadyRazzo® Tiles before spreading more adhesive. The goal is to prevent unnecessary waiting and achieve an installation rhythm. As per the training protocol, the end of the working time should begin as the adhesive becomes “Dry-to-the-touch”. The time will vary depending on site and substrate conditions. From the time that adhesive condition is reached the working time is two (2) hours and the flooring must be installed and rolled within that time frame. When installing, it is the Flooring Contractor’s responsibility to take into consideration the conditions and the available working time and make adjustments for the size of each section to be installed.

6.2 OTHER SUBSTRATES

For all other types of substrate, it is mandatory to contact Summit International Flooring at 1(877) 496-3566 for consultation, scheduling a possible site review, and project-specific instructions regarding the subfloor preparation before installation.

7 LAYOUT

The material layout should be decided by the architect, designer or end user. Summit International Flooring generally recommends that the tiles (2' X 2') are installed point to point and panels (2' X 4') are installed following a brick-bond pattern. Measure and mark starting lines using a string line, straight edge/pencil, and the 3:4:5 method. Take care in planning so as to avoid having small cuts at the perimeter.

ReadyRazzo® Tile are a natural product and each tile is individually cast - no two tiles are exactly the same. For this reason, it is necessary to dry lay the floor tile in sequenced courses prior to installation to inspect and ensure that the visual properties will flow smoothly from one tile to the next. The installer must dry lay the tiles, step back and review the appearance of the installation before proceeding. Tiles should be turned, rotated, or used as perimeter cuts if necessary in order to achieve a more uniform look. It is advisable for the specifier and/or end user to be present for approval at this time.

8 INSTALLATION

After the substrate is prepared properly, the area must also be kept free of any other trades or traffic (protect if necessary) and remain clean. When cleaning the substrate, use only dustless vacuum cleaners to remove all dirt and debris.

8.1 Sanitary Cove Base (Flash Coving) Installation

If required, the sanitary cove base must be installed before proceeding with flooring tile installation. Inspect all walls to receive sanitary cove base to ensure there is sufficient and flat dry substrate to adhere the cove so it will not move. Do not proceed with the installation if repairs are needed to the wall substrate.

Bullnose wall base or wall tiles are installed after the floor tiles are installed.

Dry fit the ReadyRazzo® Sanitary Cove Base by starting at a door frame or inside corner then proceed in sequence around the entire perimeter including all inside and outside corners and straight sections. All should be match-marked and cut. Cut each end of the sanitary cove piece with the appropriate straight or angle cut, using a chop saw with a finish wood blade and the appropriate dust control. Each piece will be butt tightly to its adjacent piece as it is fixed in position at the base of the wall. Maintain a consistent 1/16" gap between all sanitary cove bases and the door frames. All cut markings should be made in pencil.

Note: A hot air gun may be used to flex the base pieces to conform to site conditions. Once cooled, ReadyRazzo® Sanitary Cove Base will retain the flexed shape when adhered.

Adhere the sections one at a time into position using either Mapei Ultra Bond ECO 373, ECO MS4, or use Mapei Type 1 Professional Tile Adhesive. Note the drying time for Mapei Type 1 tile adhesive is longer than Mapei ECO 373 or ECO MS4. Apply a thin amount of adhesive to each cut end of the sanitary cove piece, push each end against the previously fixed piece to eliminate any gap between the sanitary cove ends.

Clean-up: Immediately remove any excess caulking or adhesive using a clean cloth and mineral spirits. Firmly press and roll back towards the prior section with a hand roller to ensure proper positioning and bonding.



Photo #1: Cut sanitary base to fit



Photo #2: Secure base with adhesive



Photo #3: Finished sanitary base

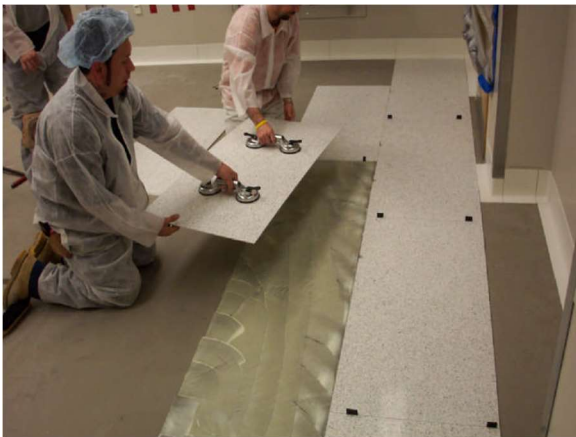
8.2 Tile Installation

BONDED Joints: It is customary to start from the center of the room using your start lines. The recommended method is to complete one row (2 tiles wide) at a time. In corridors and small spaces, it may be simpler to work lengthwise from one end, using the start line as a guide. Use spacers to allow a $\frac{1}{16}$ th inch gap between all of the tiles. This space is later filled with the BONDED resinous grout. In addition leave a $\frac{1}{16}$ th inch gap around all door frames, etc.

Prior to installing the tile in each row, dry lay a 3 tile wide row of tiles the length of the row. Checking each tile for visual acuity to the adjacent tile. After checking the tiles, neatly stack the tiles in the same position and place the stack where you will begin the row near the center of the room.

Apply Mapei Ultra Bond ECO 373 or ECO MS4 adhesive with a $\frac{1}{16}$ x $\frac{1}{16}$ x $\frac{1}{16}$ square notched trowel evenly, without the formation of puddles or voids. Do not make any sharp turns with the adhesive trowel as this practice can result in uneven adhesive, drying, and bond failure.

After the proper “modified wet set” has been tested and achieved place the tile into the adhesive bed, using the proper $\frac{1}{16}$ inch spacers. Immediately after placement into the adhesive bed, slowly roll in both directions after each row is finished using a three part 100 lb roller to roll the row of tile slowly in each direction, north to south and east to west. Keep rolling the previously installed rows along with the current row until each row of tile has been rolled three times in each direction.



Suction cups are helpful with 2' x 4' tiles
For BONDED, use 1/16 inch spacers between tiles



Use a 100 lb floor roller as soon as tile is set.

8.3 Walls Tiles/Bullnose Cove Base Tiles

After installing the floor tile, wall tile or cove base tile can be installed on top of the floor tile or on top of the sanitary cove if required. Carry all floor joints through to the wall or cove base tile, keeping a $\frac{1}{16}$ " joint for BONDED installations and no joints for a butt installation. All joints or spaces between tiles should be filled with a silicone caulk color matched to the color of the resin in the tile. (Do not use BONDED to fill vertical joints between tiles)

Adhere each piece to the wall using either Mapei Type 1 Professional Tile adhesive, appropriate double-sided contact tape (Siga or similar) applied to the back of the cove base, or use Mapei Ultra Bond ECO 373 or ECO MS4 using a $\frac{1}{16}$ x $\frac{1}{16}$ by $\frac{1}{16}$ square notched trowel on the wall and the flat side of a trowel to apply a thin layer to the back of each individual piece. Once the adhesive has achieved the proper “modified wet set” fix the pieces to the wall and roll them in both directions using a soft vinyl roller. If the wall has deviations then it may be necessary to apply heat with a heat gun to allow the tile to relax enough to adhere to the wall. Use your vinyl roller after applying the heat to fully fix the tile to the wall.

Only if the ReadyRazzo® floor is to be BONDED, maintain a 1/16" gap between the sanitary cove base, bullnose cove base tiles or wall tiles. Use green FrogTape to tape off both sides of each seam - the tape must be flush with both edges. Slightly overfill the gap using a wall tile caulking (generally color-matched silicone or similar), and smooth off with a small (~ 1") paint scraper or similar, pushing the excess onto the FrogTape. Immediately and carefully remove the green FrogTape. **Clean-up:** Immediately remove any excess or spilled caulking using a clean cloth and mineral spirits.

For butt joined installations, apply a small amount (enough to fill any gap) of a wall tile caulking (generally color-matched silicone or similar), between each bullnose/tile and press them together during placement. **Clean-up:** Immediately remove any excess caulking or adhesive using a clean cloth and mineral spirits.

When placed into the correct position, roll the tiles firmly into place using an extendable wall roller. This must also be re-rolled at least twice more every 30 minutes.

8.4 BONDED SEAMING

BONDED seaming can be done one hour after tile is installed. BONDED sets up more quickly than traditional tile grout so care must be taken. Tools required for BONDED mixing and application include protective gloves and eyewear, a slow speed mixing drill with a paddle appropriate to mix paint in a 5 gallon bucket, plastic disposable quart mixing cups, disposable seam sealing bottles, 4" or 2" razor scraper, and a wooden paint stirrer for mixing.

BONDED will arrive in portioned units available for mixing:

- A) Pigmented Resin
- B) Calcium Carbonate
- C) Catalyst

Using the pigmented resin (A) container provided, slowly add powdered calcium carbonate (B) also provided, while mixing with a low-speed drill with paddle attachment. Mix Part (A) resin thoroughly with Part (B) calcium carbonate; the resulting mix should contain NO clumps of powder.

Then, using the plastic mixing container provided and wooden paint stirrer, pour 20 fluid ounces of the previously mixed (A) and (B) components into the quart mixing container and add (1) vial of the catalyst (C). Do not mix partial units.

Mix thoroughly with the wooden paint stirrer for a full 3-4 minutes to a uniform consistency and color. Once mixed, pour the BONDED into a plastic baggie for application. **Note:** BONDED colors will be labeled appropriately along with the respective component parts as the amount of catalyst can change by color. Refer to the instructions included with the BONDED shipment.

Mix and apply the 20 fluid ounce mixture, then clean your tools with denatured alcohol before preparing a second mixture as they cannot be cleaned once cured. Each 20 fluid ounce mixture will cover roughly 100 sq. ft. area with 1/16 inch wide joints.

Inject the mixture into the tile joints by using the baggie by cutting one corner and squeezing like decorating a cake. (It is vital to fill the joint completely from the bottom to the top of the joint).

The proper application of BONDED requires three specific steps:

- 1) Fill the joints completely, applying enough pressure to bring the BONDED level or flush with the tile surface.
- 2) After ~10 minutes, make a second pass to leave at least a 1/8" bead over the top of each tile joint. As the BONDED starts to "set or harden to a boiled egg consistency," remove the excess from the surface of the tile (before it hardens) using a razor scraper.
- 3) After each joint has been skived, check all seams for any low spots and reapply BONDED when necessary, using the same application and removal process. All tile seams should be on the same plane as the tile surface.



BONDED System resin and catalyst



Mix resin and catalyst



Stir thoroughly



Apply BONDED to joints



Remove excess BONDED

9 Wet Polishing

All ReadyRazzo® BONDED installations must be wet-polished. Wait at least 12 hours after skiving before starting to wet polish. Lippage (differences in elevation between the edges of adjacent tiles) and excess BONDED resin residue must be removed during this process. Excess BONDED and lippage is removed by wet polishing each joint two times in each direction, North to South and East to West with each type of pad. (3" 120 grit lippage pads followed by the 17" 220 grit diamond encrusted pad).

Always post "wet floor" signs and/or "caution tape" when floors are wet and remove all metal objects first. Prohibit foot traffic until flooring is completely dry. Follow facilities Standard Operating Procedures (SOP).

Wet polishing requirements can vary from project to project. It includes at least 2 steps, but others may be required. Please contact a Summit International Flooring beforehand for confirmation of the requirements for your project. Use a 17" Mastercraft Buffer or similar with water tank and weight pin to add 40-50 lb weights. The Metabo hand-held polisher with a 3" polishing pad attachment is required for the edge polishing.



Mastercraft Buffer

Note: In the event that the installation is of darker pigmented tiles [see chart below] replace the 120 grit diamond lippage plates with 120 polishing pads and then finish using the diamond encrusted course pads.

<u>Collection</u>	<u>Color</u>
ReadyRazzo Tiles - Rockstar	Jimi Hendrix
ReadyRazzo Tiles - Rockstar	Jim Morrison
ReadyRazzo Tiles - Rockstar	Carlos Santana

****Consult Summit International Flooring with any custom colors****

- Smooth the lippage off by wet-polishing with the 120 grit diamond lippage plates
- Smooth the surface by wet-polishing using Course Diamond Encrusted pads.

Remove the slurry as needed and between each step use a wet-vacuum. **Note:** A squeegee helps to keep the water/slurry where needed.

Perform a visual inspection between each step to be sure each process is completed properly. After the first step has been completed using the 120 grit diamond lippage pads, remove the slurry and mop the floor with clean water and allow the floor to dry. Once the floor is dry, visually inspect the surface of the tile for shiny areas that had been missed with the first step of the wet polishing process. Mark all the shiny areas with blue painters tape and use the hand held polishing machine to polish each identified area until the entire floor has the same dull appearance when it's dry. After 100% of the surface of the tile has the same dull appearance, then you can proceed with the second step in the process. In the event of any concerns, consult Summit International Flooring immediately. This procedure must be slowly and thoroughly performed in both directions until completed to satisfaction.

Rinse the floor using clean water, a micro-fiber mop and wet-vac, then allow the floor to fully dry. Do not leave the floor unprotected without applying the Primer or Sealer, depending on Finish selected for the project (after initial cleaning). The penetrating Primer/Sealer protects the floor and provides a base coat for the application of floor finish.



Wet-polishing procedure to remove any residue and eliminate lippage.

10 CLEANING PRIOR TO FINISHING

Remove all surface soil, debris, sand and grit by sweeping, dust mopping or vacuuming. Scrub floor with a neutral detergent, such as Hillyard Super Shine All or equivalent, following the instructions and dilution rates per the label. Apply with a mop and bucket using as little solution as possible. Do not saturate the floor.

Scrub with a single disc scrubbing machine or an automatic scrubber using a scrubbing pad (either red or white depending on soil load). Then remove the slurry with the vacuum attachment or a wet-vacuum, rinse thoroughly with clean water and allow floor to completely dry.

11 PRIMING/SEALING AND FINISHING

Project-specific priming/sealing and finishing procedural documentation is administered by the product and technical training specialist at the time of order, depending on what has been selected by the architect/owner. Please refer to this information for the proper protocol and next steps.

12 ADDITIONAL INFORMATION

To minimize the chance of damage, proper glides must be used on chairs and other furniture that may slide directly across the floor. They must have glides that are a minimum of 1" in diameter. Heavy objects such as equipment, appliances, fixtures and heavy furniture must not be moved directly across the floor. Using protective boards will reduce the chance of damage.

Direct sunlight can cause UV damage (fading or bleaching) to most interior finishes so Low E glass should be selected that will reduce the UV transmission to less than 1%. If glass without sufficient UV protection has already been installed, apply 3M™ protection film (or similar) on the windows to reduce the UV transmission to less than 1%. Please contact the film manufacturer for specific recommendations and application instructions.

Note: These instructions supersede any verbal or written instructions from Summit International Flooring representatives, and must be followed for the warranty to be in effect.