

# fitnice

FLOOR

**EXTENDED MANUAL FOR INSTALLATION: ROLLS**

Please read the whole document before installing Fitnice® Floor. Not complying strictly with the following installation instructions will affect your warranty.

Installation must be carried out by an authorized installer.

Fitnice® Floor is suitable for residential and public spaces including high traffic areas.

Fitnice® Floor is not suitable for spaces that are permanently or very frequently wet.

Fitnice® Floor is not intended for sports areas.

This manual is based on and according to European Standards CEN/TS 14472-4:2003-1 and CEN/TS 14472-4:2003.

## BEFORE INSTALLATION — GENERAL ADVICE

- Ensure that the chosen design and color of Fitnice® Floor fulfills the requirements of the specific building or room, as well as local building regulations.
- Determine the direction in which the rolls are to be laid. Vertisol strongly recommends installing rolls perpendicular to the predominant direction of sunlight. The sides of the roll should be parallel to one of the main walls.
- Avoid placing seams in areas of maximum traffic and close to doors. In corridors the rolls should be installed in the direction of traffic. Direction of traffic should take precedence over direction of sunlight.
- When calculating the quantity of flooring required, take into account a 5-centimeter overlap at the seams, in addition to the area of the space to be covered.
- In main entrances, a doormat barrier of at least 3 meters in length must be considered in the design phase.
- Planning the overall job timeline:
  - Fitnice® Floor installation should begin only after the building is fully enclosed (when the walls, windows, doors and roofing are completed).
  - Means of transporting the rolls to the floor where they will be installed should be planned in advance.
  - Schedule flooring installation as the final phase of the project to avoid damaging it while other work is being done on the room. If this is not possible, be sure to protect it with a plastic sheet or cardboard.

- The installer must obtain detailed information related to the subfloor characteristics:
  - Levelness of the surface
  - Expansion joints (to avoid installing Fitnice® on them)
  - Heating
  - Subfloor composition
  - Curing time of subfloor (new or refurbished)
- Take into account that Fitnice® is a textile product in which slight color irregularities and weft slope are not defects.
- In the Chroma collection, gaps may be perceived due to the visual effect of the bi-colored yarns. This is not a defect of the product.
- Do not mix different lots.

## SUBFLOOR VERIFICATION AND PREPARATION

The floor on which Fitnice® is to be installed must be clean, dry, smooth and without cracks and grease. It must also be of medium porosity<sup>1</sup>, pressure resistant and free of surface moisture, not only during installation but for the entire lifetime of the product (more than 10 years).

Requirements of moisture content are established by national codes:

Standard/Country	Method	Requirement
BS 5325/ BS 5203 UK	Relative humidity in equilibrium with the subfloor	75% Maximum
NF P 62-203-1 France (Germany)	Drying in oven at 70°C	3% Maximum
AMA 98 Sweden	Relative humidity in holes	< 85%/< 80% depending on material
Ö NORM B2236-1 Germany	Concrete Moisture Test	< 2.5%/< 0.3% depending on material
CSTC 165 Spain	Concrete Moisture Test	Anhydrite < 1% Mortar < 4%

If the subfloor does not meet the specified requirements, it will have to be treated before Fitnice® is installed.

<sup>1</sup> To determine whether a surface is suitably porous, release a drop of water from a height of approximately 20 centimeters:

- If the drop is absorbed immediately, the surface is too porous
- If the drop is not absorbed at all, the surface is not porous enough (e.g., plastic or metal)
- In all other cases, the surface porosity is acceptable for the installation of the product

Subfloor materials that are permeable to moisture must not be used (or must be removed in the case of refurbishing) unless a waterproofing membrane is installed underneath.

Fitnice® Floor will not hide surface defects. Correct installation depends on the quality of the subfloor.

Materials such as wood and fiberboard are not suitable as Fitnice® substrate as they will cause problems of irregularities and moisture. Wood flexibility may affect Fitnice® seams. In refurbishing projects such floors should be changed, or adequately protected and leveled with self-leveling compound.

Fitnice® Floor cannot be installed on subfloors composed of more than one material, such as wood and concrete.

In refurbishing projects, the old floor covering must be carefully and completely removed (leaving no traces), to expose the original subfloor. Only in special cases where there is no moisture and it is possible to level the old floor surface with self-leveling compound (e.g., in the case of ceramic tile floors with no moisture) can Fitnice® be installed over the original floor, after it has been suitably pretreated. Fitnice® cannot be installed over old textile coverings such as wall-to-wall carpet or other vinyl floor coverings.

Vertisol recommends the application of a primer to increase the adherence between the subfloor and the self-leveling compound applied to level the surface onto which Fitnice® Floor will be installed.

Follow these detailed steps to prepare the substrate surface before installing Fitnice®:

1. Carefully clean the surface. Use a vacuum cleaner to eliminate dirt or dust. Also eliminate any traces of grease, adhesive, or other materials that could remain.
2. Check the capacity of absorption and the moisture content of the surface to select the most suitable primer or self-leveling compound for the installation (see footnote 1).
3. Apply primer according to the surface to be treated and let it dry as indicated by the manufacturer (approximately 12 hours<sup>2</sup>).
4. Expansion joints must be respected. Fill them with an elastic material before applying self-leveling compound. Fitnice® Floor should not be installed over them. Construction and contraction joints, on the other hand, will not move, and can be prepared the same way as cracks.
5. Apply self-leveling compound and let it dry for the time indicated by the compound manufacturer (approximately 24 hours). Once the compound is dry, ensure that the surface is absolutely smooth and flat.



6. If there are irregularities in the surface a second layer of self-leveling compound should be applied. Wait until the first layer is dry enough to walk on with no problem before applying the second layer.

7. Before installing Fitnice®, clean the leveled surface. Ensure that the layers of pretreatment are perfectly dry and the subfloor meets local moisture requirements (see the table of country standards).

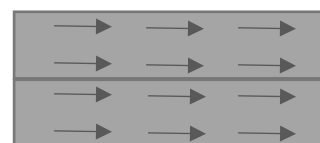
#### ACCLIMATIZATION, MANIPULATION, AND PREPARATION OF FITNICE® ROLLS

To ensure that the floor covering maintains its properties during installation, proper storage and manipulation are required.

Rolls should be transported and stored horizontally in their original packaging, and kept at a room temperature of 18–22°C and relative humidity of 50–60%.

Fitnice® Floor should be cut to size at least 24 hours before being laid in place. Allow a cutting waste margin of 25 cm extra in length and 2.5 centimeters in width on each side that will have a seam with an adjacent sheet (5 cm extra width for sheets with seams on both sides). It is best to leave Fitnice® sheets placed flat on top of each other for 24 hours in order to eliminate any minor deformation of shape that may have occurred during transport.

Be sure that all sheets are laid in the same direction, marked by the arrows on the backing. Failure to respect these arrows will lead to visual differences between sheets.



<sup>2</sup> The indicated drying times (both for the primer and for the self-leveling compound) are relative, depending on factors such as ventilation and environmental conditions (dampness and temperature), type of surface, etc. Therefore, before applying subsequent layers it is vital to ensure that the previous layer is completely dry over the whole surface.

Before cutting, the installer must check the material in order to verify the following:

- Product and color agree with the purchase order.
- Quantity delivered agrees with the purchase order.
- Dimensions and aspect are correct. In case of defects or damage during transport, please contact our sales team before cutting or installing the material. Vertisol will not accept claims on manipulated or installed material.

To ensure a good color match, check that all the rolls to cover a specific area have identical lot numbers.

As Fitnice® is a woven material some minor natural variations in color and structure can occur between sheets. Once the material is unrolled we strongly advise against rolling it again, as this could cause undesirable marks.

Vertisol does not accept any responsibility for defects caused by incorrect handling or storage (e.g., rolls stored vertically or without the original packaging, placing weight over the roll when the material is still rolled up, or storing tile boxes vertically or otherwise improperly).

#### SUBFLOOR ACCLIMATIZATION

Keep the installation area at 18–25°C and the relative humidity below 60%. For correct adhesion, the temperature of the subfloor should be 15–20°C and with a moisture level lower than the maximum recommended by the national codes. These conditions must be maintained during the entire installation process.

After preparing the area, Vertisol recommends waiting at least 24h before installing the floor covering.

If the material is installed over floors with underfloor radiant heating, special precautions are necessary:

- Check that the radiant floor heating works properly before proceeding with installation.
- Take into account that the minimum curing time for concrete is 21 days.
- Keep the floor at 25°C for three days, and then gradually raise the temperature to the maximum temperature for four days. Repair any cracks that may have appeared, and heat again for 14 days.
- Switch off the radiant floor heating at least 48 hours before installing Fitnice®, and keep it off for at least 48 hours after finishing the installation process.
- If necessary, use a different heating system to ensure adequate temperature conditions for the installation.
- After installing the floor covering, gradually increase the radiant floor heating to no more than 27°C. Temperatures higher than 27°C must also be avoided if there is piping in subfloor.

#### RECOMMENDED ADHESIVES

The adhesives listed below have been tested and approved for the installation of Fitnice® Floor.

#### SUBFLOOR PREPARATION

Primer: Primer G, MAPEI  
Self-leveling compound: Ultraplan, MAPEI

#### ADHESIVES:

- Ultrabond ECO4 LVT	MAPEI
- Eco V4 SP	MAPEI
- Multi Coll	WULFF
- Thomsit 188E	HENKEL
- SLC ECO r3	KERAKOLL
- Primacola C-15	RAYT
- F-44	F-BALL
- Miplafix-300	BOSTIK
- Miplafix-400	BOSTIK
- Miplafix-800	BOSTIK
- Power Elastic	BOSTIK
- Sadertak V6	BOSTIK

Double-sided tapes should not be used instead of the adhesives recommended by Vertisol.

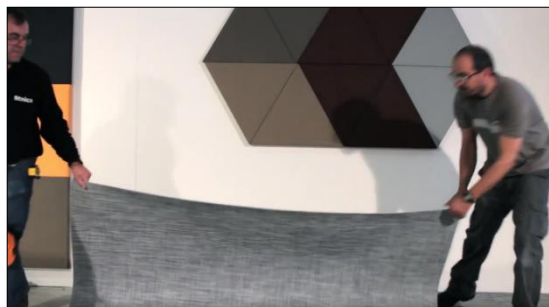
Always read carefully and follow the recommendations and advice of the adhesive manufacturer.

#### ROLL INSTALLATION OVER FLAT SURFACES

##### 1) Gluing

i) Once Fitnice® Floor has been laid flat for 24 hours, position the first piece, and cut and make necessary adjustments to adapt the material to the space.

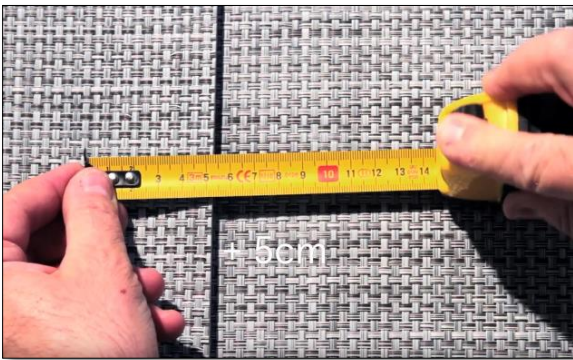
ii) Lift and fold back half of the sheet of Fitnice® (long dimension for pieces shorter than 2 meters and short dimension for longer pieces) and apply adhesive onto the floor surface below it. If using a water-based acrylic adhesive, it is not necessary to apply glue onto the Fitnice® material. Follow the manufacturer's instructions.



Let the adhesive dry according to the manufacturer's instructions and the type of adhesion (wet or dry adhesion). Once the adhesive is ready, lower the lifted half of the Fitnice® to the floor surface. Then lift the other half of the sheet and apply adhesive to the floor under it. Spread the adhesive carefully in the middle zone under the fold where the Fitnice® has been lifted.

**Important:** Use a notched spatula to spread adhesive in lines parallel to the roll direction (fabric length). Use approximately 300 g/m<sup>2</sup> of adhesive. Always check product specifications.

iii) Follow the same procedure for all the sheets to be installed. When placing each adjacent sheet, it is important to match the design with the previous sheet, and create an overlap of 5 centimeters. This is necessary for making the seams.

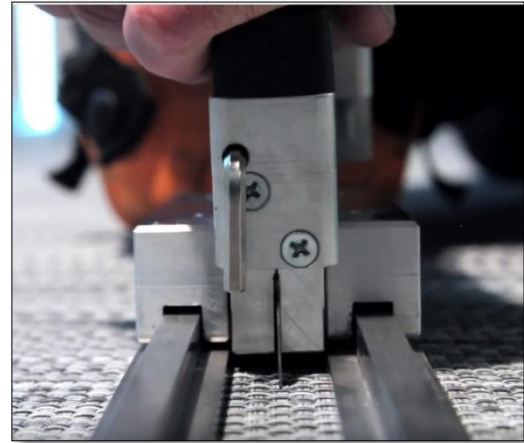


iv) Once the floor has been installed, and before cutting the seams, press the whole surface with a pressure roller (at least 50 kg) to increase the contact between the adhesive and Fitnice® Floor and remove any air bubbles. Roll from the center to the edges of each sheet.



## 2) Seam cutting and cold welding

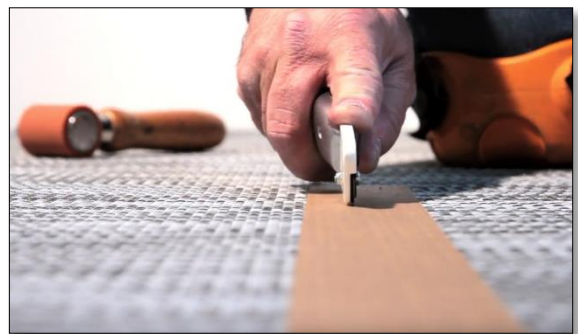
i) **Double Cut:** Remove residual glue and place a movable cutting blade on a guide rail over the middle of the overlap between two sheets. Cut through both sheets of Fitnice® at the same time. Remove the scrap from both sheets, and press the seam with a pressure roller.



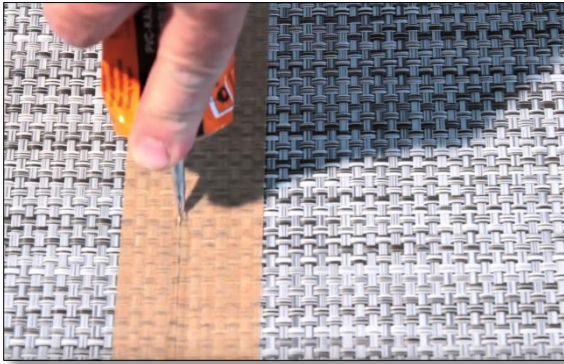
ii) **Cold welding** should not be done until the adhesive is completely dry. Protect the seam with masking tape at least 5 centimeters wide, pressing it down with a silicone roller to fix the paper tape well into the relief of the weave.

To ensure durability and impermeability of the seams, it is necessary to chemically weld them using a seam sealer such as Werner Müller Type A PVC-Cold-Welding Liquid, which is available in a 132-g (150-ml) tube. The chemical weld will seal the seam, preventing any infiltration of water or dust. This cold welding protects the support and the adhesive, maintaining all the mechanical characteristics of adhesion and durability. Through this process, Fitnice® Floor becomes permanently resistant to mechanical stress, preventing seams from coming open and detaching at the edges as a result of traffic. Regulations in some countries require this treatment for vinyl flooring seams depending on the nature, classification and usage of the premises. Check your local regulations.

**Important Note:** Seams must be sealed according to the manufacturer's instructions.



Cut the masking tape with a utility knife along the cut in the flooring. Shake the tube of cold-welding liquid and insert the needle deep into the joint. Slide the needle along the seam while squeezing the tube to adjust the flow. Let dry at least 30 minutes and remove the masking tape.



- For outdoor installation, always use rolls, not tiles. The seams must be sealed to ensure water tightness.
- Be aware that differences between cut lengths can be more evident outdoors due to the bright light.
- Clean frequently to prevent the accumulation of dirt.

NOTE: PVC loses its flexibility at temperatures below  $-15^{\circ}\text{C}$ . The suitability of Fitnice® for outdoor use under extremely cold conditions has not been tested.

### INSTALLATION ON UNDERLAY

In order to provide the floor with extra sound insulation, softer cushion, etc., it is possible to install an underlay before installing Fitnice®. The steps before installing the underlay are the same: the floor must be clean and leveled with a self-leveling compound in order to obtain an even surface.

For further information, please contact the Vertisol Sales Department or follow the underlay manufacturer's instructions.

### INSTALLATION ON STAIRS

Molding placed on the protruding edges of stairs provides protection for the floor covering and prevents accidents. Vertisol recommends always using molding on stairs.

Vertisol offers specific aluminum nosing with insertion of the material on the protruding edges of the steps.

- Available colors: aluminum, stainless steel, and bronze. Installation should start from the lower part of the stairs: riser-tread-riser. Cover the tread with a Fitnice® strip and trim the edge against the riser. Place the strip of floor covering on the tread, and trim the lower edge to adjust it on the tread. Seal the joint at the recessed angle between the tread and the riser.

#### Important note:

Cold welding melts the flooring at room temperature. Incorrect use of this product could cause irreparable damage to the surface of Fitnice®. Vertisol recommends testing the welding liquid before the final installation, keeping in mind that installation should be performed by a professional installer.

#### 3) Edges and baseboards

At the edges of walls and along baseboards, the connection with the flooring must be clean. Cuts should be made with a suitable cutting tool to produce a perfect 90-degree angle.

Edges and corners should be reinforced with superglue.

v) Once the installation is complete, clean the flooring of glue spots and debris. Allow the adhesive to dry according to the drying time specified by the manufacturer and the type of adhesive (wet or dry adhesion). After installation, cover with plastic film to prevent the flooring from being soiled during subsequent jobs by other workers.

The drying time after installation completion should be no less than 24 hours before normal traffic and 48 hours before heavy commercial traffic.

The first thorough cleaning and placement of furniture should not be done before 72 hours after installation completion (see maintenance tips).

Always use proper protection for any heavy load movement.

### OUTDOOR INSTALLATION

Fitnice® Floor is suitable for outdoor use, but the following rules must be followed:

- This section applies only to roofed or partially roofed areas. Fitnice® should not be installed in completely open areas.
- The subfloor must be treated to protect it from moisture. If necessary, a waterproofing membrane should be placed underneath.
- The floor surface must have a minimum slope of 2% to allow drainage.
- Self-leveling compounds must be resistant to moisture.
- Use adhesives that are specifically for outdoor installation. Recommended:
  - Adesilex G20 MAPEI
  - Bostik PU 456 BOSTIK
  - Stycobond F81 F. BALL