



Summit International Flooring

INSTALLATION / MAINTENANCE GUIDELINES **INDOOR RUBBER FLOORING** **SQUARE CUT / GLUE DOWN**

- TRIATHLON 800 SERIES
- KALEIDOSCOPE
- MARATHON
- EARTH
- PRISM
- OPULENCE



Square Cut Glue Down Installation



Reg # SCS-FS-04374

This product has been certified by SCS to meet the rigorous indoor air quality requirements of the FloorScore® certification program.

The following pages are guidelines only... please read this manual thoroughly before installing SUMMIT INTERNATIONAL FLOORING Rubber Flooring products.

TABLE OF CONTENTS

<u>SECTION</u>		<u>PAGE</u>
PRODUCT		
I	MATERIAL STORAGE & HANDLING	3 - 4
II	TOOLS & ACCESSORIES	4 - 5
INSTALLATION		
III	BEFORE STARTING INSTALLATION	5 - 6
IV	PREPARATION OF SUB-SURFACE	6
V	INSTALLATION OF SQUARE CUT TILES	7 - 9
MAINTENANCE		
VI	CLEANING & MAINTENANCE	10
GENERAL		
VII	LOGO INFORMATION	11
VIII	WEIGHTS & MEASURES	12

SECTION I

MATERIAL STORAGE & HANDLING

General packaging information

All Summit International Flooring products are packaged on wooden pallets, covered with a plastic hood, and secured by steel strapping.

On receipt of merchandise:

- A)** The product in front of you has gone through several quality assurance checks. However, it is recommended that you double-check that your order is correct, that no damage occurred during transport, and for any other possible shortcomings. For your own protection, ensure that defective product is identified prior to the start of the installation. Please note that Summit International Flooring is not responsible for any installation costs that occur as a result of defective product being installed.
- B)** If adhesives were exposed to freezing temperatures, place indoors and bring to room temperature between 65°F (18°C) and 72°F (23°C) before using. Read Technical Data Sheets and MSDS Sheets for adhesive. Check adhesive cans for damage that may have occurred during transit.

SIF848 High Tack adhesive has a 12-month shelf life. If shipment has been stored for an extended time, contact Summit International Flooring to confirm adhesive has not exceeded its shelf life. Summit International Flooring is not responsible for expired adhesive used at the time of installation.

C) Storage

Store tiles in a dry and clean area. Temperature and humidity changes will cause the rubber to expand or contract. During storage, rubber tiles must be kept dry and adhesive must be stored above 50°F (10°C) in a dry heated space.

D) Installation after short term storage

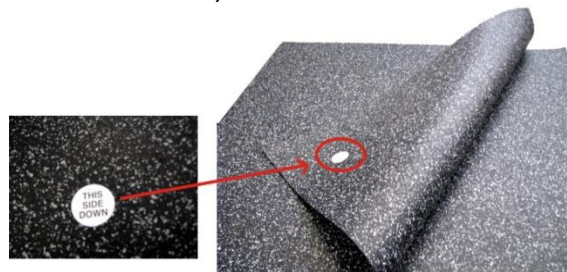
At least 48 hours before starting the installation lay out all tiles on the sub-surface, in piles of two or less, to allow them to acclimate. A tile laid down in the morning hours at 32°F (0°C) would be a different size than a tile laid at 68°F (20°C) later in the day. All HVAC systems should be fully operational 24 hours before the acclimation process begins. Acclimation should only begin once the sub-surface has reached a temperature between 65°F (18°C) and 72°F (23°C). Acclimation is complete when the products have reached a consistent dimension after a 24-hour period (Dimensions: 38" x 38" = 10.02 ft² with a thickness tolerance of ± 0.5 mm); if the material is installed in any other condition than specified Summit International Flooring is not responsible. Installation should only occur when the sub-surface temperature is between 65°F (18°C) and 72°F (23°C). Short term storage should be considered as two weeks or less.

E) Installation after prolonged storage

Before placing any Summit International Flooring product in prolonged storage remove the pallet banding, leaving the other packaging on until acclimation begins. During prolonged storage, the tiles in the lower portion of the stack will compress to a greater degree than those in the upper portion. This will show as thickness variations in the products taken from the top of the pallet as compared to those on the bottom. Product dimensions (length and width) may also be affected. A longer acclimation time will be required for product that has

had a longer storage time. Exactly how long is very difficult to predict and may take up to 72 hours. All HVAC systems should be fully operational 24 hours before the acclimation process begins. The product should be taken off the pallet and distributed throughout the installation area in small piles consisting of two or less tiles. Acclimation should only begin once the subfloor has reached a temperature between 65°F (18°C) and 72°F (23°C). Acclimation is complete when the products have reached a consistent dimension after a 24-hour period (Dimensions: 38" x 38" = 10.02 ft² with a thickness tolerance of ± 0.5 mm). Installation should only occur when subfloor temperature is between 65°F (18°C) and 72°F (23°C). **Do not install** the tiles if they are not square and the appropriate thickness has not been reached. Long term storage should be considered as two weeks or longer.

- F) It is important to keep a clean working surface at all times. Protect tiles from dust and dirt. Install only after all other trades are completed.
- G) Keep Summit International Flooring recycled rubber surfacing dry. Moisture will cause adhesion problems.
- H) Petroleum distillates (e.g. solvents) as well as liquid animal fats may cause the surface bonding to fail. Test results for other harmful chemicals and compounds may be available on request.
- I) Install rubber tile flooring same side up as received. Reversing tiles may result in visible shade differences in finished surface. Each tile is marked with a label stating: **THIS SIDE DOWN DO NOT** remove these labels until final glue down commences. Make sure that all tiles are laid down with the "label" pointing in the same direction. Framing or uneven distribution of color granules may appear in a tile. This may be improved by rotating the tile 90 degrees or installing it in a less visible area. Be sure to mix tiles from several different pallets to blend minor shade variations. Install tiles same side up as received, **DO NOT FLIP OVER.** (ie: sticker bottom left)



DO NOT REMOVE THESE STICKERS DURING THE ACCLIMATION PROCESS. THEY SHOULD NOT BE REMOVED UNTIL ACTUAL GLUING COMMENCES.

SECTION II

TOOLS & ACCESSORIES

A) Tools and safety equipment required:

- Summit International Flooring Installation Guidelines
- Safety glasses
- Heavy duty utility knife
- Measuring tape
- Transit level and Straight edge
- Caulking gun, if needed to adhere reducer strip

- Chalk snap-line
- Drill and mixer for adhesive
- V-notched trowel 1/16" (1.6 mm)
- Carpenter's square
- Rubber boots & gloves

B) Reducer strips

Sizes:

- 5/16" – 3/8" (8 mm – 10 mm)
- 1/2" (12 mm)

All are available in black solid core and 12ft lengths.



5/16" – 3/8" side view
(8mm – 10 mm)

1/2" side view
(12 mm)

Attach reducer strip to mats with compatible, non-solvent based adhesive or caulking.

C) Adhesive

IMPORTANT: If adhesive other than the products noted below is used, these installation guidelines may not apply. Contact adhesive manufacturer for specific guidelines for RECYCLED RUBBER FLOORING.

Summit International Flooring recommended adhesive:

SIF848 High Tack Adhesive (V.O.C. compliant)

- Universal flooring adhesive
- 3 US gallons: 28.2 lbs. (13 kg)
- Approximate coverage: 510 sq. ft. (47.3 m²) per pail

It is not uncommon for a moisture cured urethane product to develop a slight skin on the top surface of the product. The slight skinning can be the result of product getting older, or in the case of newer product, perhaps a poor seal in the lid. Regardless, the product is still good; simply trim the skin and discard. In the case of older product, a thicker skin may have developed, and the viscosity of the overall product may have thickened; making the application a bit more difficult, in most cases it will still perform.

Note: SIF848 High Tack Adhesive has a 12-month shelf life. Summit International Flooring is not responsible for expired adhesive used at the time of installation.

SECTION III

BEFORE STARTING THE INSTALLATION

Ensure all other trades are completed work prior to installing Summit International Flooring Rubber Flooring. In cases where other trades may access the installation area, the use of Masonite board or plywood should be used to protect the rubber flooring from damage and debris.

Summit International Flooring is not responsible for any product failure if proper floor preparation and/or installation procedures are not followed.

A) During storage, rubber tiles must be kept dry and adhesive must be stored above 50°F (10°C) in a dry, heated space.

B) Check the ambient temperature:

- Minimum temperature range for adhesive use is 50°F (10°C)
- All HVAC systems must be fully operational 24 hours prior to beginning the acclimation process. Rubber flooring must be installed between 65°F (18°C) and 72°F (23°C). Any fluctuations in temperature or humidity will cause expansion or contraction of the tiles; a 3°C fluctuation in temperature can cause dimension instability of the product.
- **In-floor radiant heat should be shut off for 24 hours.**
- In all situations, working at the extreme ends of the temperature range will affect curing times, viscosity and pot life of adhesive, possibly resulting in adhesion problems.

For detailed information and product use, refer to SIF848 High Tack Adhesive Product Data Sheet, included with adhesive.

SECTION IV

PREPARATION OF THE SUB-SURFACE

The sub-surface must be level, clean, and dry. Remove all old adhesive. A rough or uneven sub-surface will result in an uneven installation.

A) Concrete sub-surfaces

New concrete sub-floors must be thoroughly cured and free from hydrostatic pressure before rubber tiles are installed (a minimum of 28 days after pour). Consult adhesive specifications for allowable moisture tolerance.

Subfloor must be smooth and level to a tolerance not exceeding 1/8" in 10 lineal feet. If existing concrete is too rough, or does not meet the above criteria, apply a Portland cement based leveling compound to smooth and level the surface. Follow all leveling compound manufacturers' instructions.

It is vital that a moisture test be completed prior to floor installation, and that sub floors are cured and dry to acceptable levels. Moisture is the single most significant factor that causes bonding failure to the sub floor.

B) Wooden sub-surfaces

- New plywood should be acclimatized for a 48-hour period prior to installation of the rubber flooring.
- CDX exterior smooth one side suggested for new wood substrates.
- Secure all nails to prevent future protrusion.
- Any cracks, holes, and rough or uneven areas should be patched with good quality cement based leveling compound.
- ***It is vital that a moisture test be completed and records kept prior to floor installation, and that sub floors are cured and dry to acceptable levels.*** Moisture is the single most significant factor that causes bonding failure to the sub-floor. Warranty is not applicable if specified moisture ranges are not adhered to.
- Wood sub-surface must be a minimum of 1" thickness, and free from any flex movement.

SECTION V

INSTALLATION OF SQUARE CUT TILES

Important: See Section I, (D) and (E) regarding acclimation of tiles.

Visually inspect all mats for visible defects. Ensure that defective product is identified prior to the start of the installation, set these aside and notify dealer immediately with information of any defects found.

Glue down installation is required for all square edge tiles. This installation method and tile format is a must for areas of extreme temperature and humidity change, or where surface moisture may be present after installation, i.e. ice arenas, locker rooms and entry ways.

1. ARRANGING THE TILES

The installer should have all relevant information about the tile arrangement from the owner.

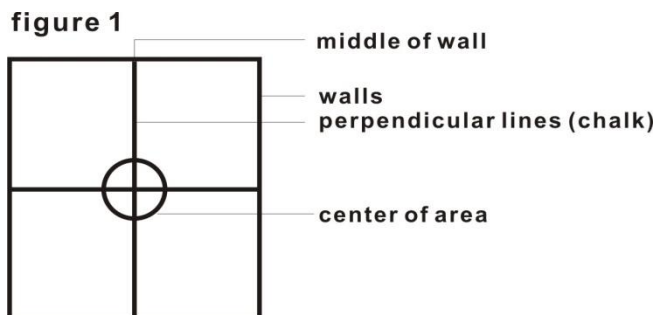
Note: If installing a logo, see Section VII now.

Each tile is marked with a label stating:

THIS SIDE DOWN DO NOT remove these labels until final glue down commences. Make sure that all tiles are laid down with the "label" pointing in the same direction. Framing or uneven distribution of color granules may appear in a tile. This may be improved by rotating the tile 90 degrees or installing it in a less visible area. Be sure to mix tiles from several different pallets to blend minor shade variations. Install tiles same side up as received, **DO NOT FLIP OVER**. (ie: sticker bottom left)

Locate the midpoint of the room, and chalk a start line down the center. Chalk another similar start line 90 degrees and square to the first one. Begin mat installation from the point where the two chalk lines intersect. Work outwards in both directions.

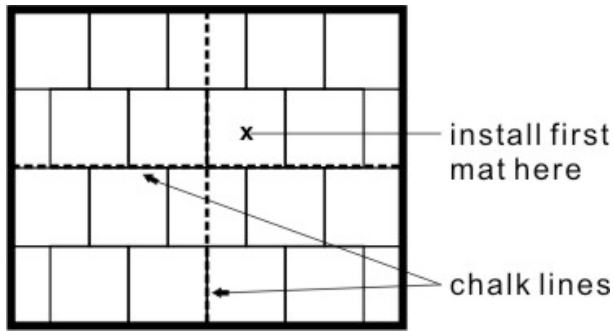
(See figure 1).



Start second row on either side of the center line towards the chalk line. Make sure that second row is installed by staggering the tiles. This will avoid any four corners from meeting at one spot **(See figure 2 for ashlar installation example)**.

IT IS VITAL THAT TILES ARE INSTALLED IN AN ASHLAR PATTERN, NOT CORNER TO CORNER. DINO FLEX WILL NOT SUPPORT A CORNER TO CORNER INSTALLATION (See figure 2).

Figure 2



2. MEASURING & CUTTING

Lay tile on a flat surface, hold the metal straight edge on the cut line, and cut with sharp utility knife. Keep scoring the cut until separated. Change or snap off blades frequently to ensure clean cuts. For odd angles, circular patterns, etc. a cardboard template is suggested. Join water cut edges together. Hand cut edges should be used against walls wherever possible.

Make sure that you measure carefully so that the tile will fit properly and does not leave gaps, resulting in the installation being out of alignment.

3. ADHESIVE

IMPORTANT: If any adhesive other than Summit International Flooring's recommended adhesive is used, these installation guidelines may not apply. Contact adhesive manufacturer for specific guidelines for Recycled Rubber Flooring.

A) General

- Please read SIF848 High Tack Adhesive Safety Data Sheet supplied for adhesive thoroughly before starting with the installation.
- Moisture is the single greatest cause of bonding failure. Ensure levels are at or below those accepted by adhesive manufacturer.
- Higher temperatures and humidity cause the adhesive to cure faster.
- Use safety glasses, rubber boots, and rubber gloves when applying adhesive.
- Room must be well ventilated.
- For first aid and safety instructions see labels on can, Safety Data Sheet, and MSDS.

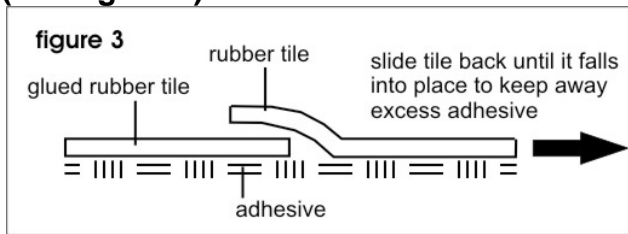
B) Applying Adhesive

DO NOT GET ADHESIVE ON THE TOP SURFACE OF THE RUBBER FLOORING AS IT IS VIRTUALLY IMPOSSIBLE TO REMOVE. CONTACT YOUR SUMMIT INTERNATIONAL FLOORING SUPPLIER IMMEDIATELY FOR SUGGESTED CLEANING METHODS IF THIS HAPPENS.

All substrates must be structurally sound, smooth, clean, dry, and free from dust, loose material, grease, oil, wax, sealers, curing agents, and other foreign materials. Apply adhesive with 1/16" (1.6 mm) V-notch trowel. (Available from Summit International Flooring) Using a larger trowel will result in excess adhesive coming up between seams. **Wear gloves at all times when applying adhesive. Do not allow adhesive to cure on your hands.**

Put the tile that you are installing on top of the tile already glued down and pull towards the area you want to fill until the tile falls into place, then firmly press tile up to edge of existing tile. This will keep excess adhesive from protruding between the seams.

(See figure 3).



DO NOT use tape of any kind during installation. Tape residue cannot be removed from the top surface.

When applying adhesive, glue must be spread evenly on the sub-surface to avoid differences in tile height. Allow 48 hours setting time. Avoid heavy traffic during curing. See **Section C – Rolling**

C) Rolling

Roll each row as completed. Roll the entire floor when project is completed. Work in both directions. Note that adhesive is slippery when first spread and tiles will shift position even if only disturbed slightly. No foot traffic of any kind should be allowed for the next 12 hours (24 hours for ice skate blades and cleats), allow 72 hours for maximum strength.

A 50 to 70 pound roller should be used to ensure the underside tile surface is fully bonded to the glue and sub-floor. Too much rolling or too heavy a roller could cause the tiles to buckle and adhesive to move upwards through the seams. Furthermore, stretching of the rubber flooring can eventually lead to gaps between the tiles.

Guideline:

5/32" (4mm) thick floor - use a 50 lb. roller

1/4" (6mm) thick floor - use a 50 lb. roller

3/8" (10mm) thick floor - use a 70 lb. roller

D) Clean Up Adhesive

Do not allow excess adhesive to come in contact with top surface of rubber flooring as it is virtually impossible to remove. Contact your Summit International Flooring supplier immediately for suggested cleaning methods if this happens. **Using mineral spirits or similar products to remove adhesive will alter the surface appearance of the tiles. Any damage to the tiles as a result of adhesive removal is solely the responsibility of the installer.**

Follow adhesive manufacturer's instructions for cleanup of tools.

A) Post Construction Cleaning

When installation is complete, and adhesive is fully cured (at least 72 hours), sweep floor to remove any debris, then dry vacuum thoroughly to remove all surface dust and dirt using a high CFM vacuum. Using a neutral cleaner, according to label instructions, scrub the floor with a cylindrical brush auto scrubber. If disc type equipment is used, be sure to use soft nylon brush, not a pad. **Do not flood the floor.** Allow to dry thoroughly (6-8 hours). Apply treatment of floor sealer according to instructions provided by Summit International Flooring if desired.

SECTION VI

CLEANING & MAINTENANCE

A) INITIAL CLEANING POST INSTALLATION

When flooring installation is complete, sweep floor to remove any debris, remove all surface dust and dirt with a heavy-duty dust mop or microfiber dust mop. Damp mop with a neutral cleaner diluted with warm water; use a microfiber mop. Use a two-bucket system and change the water frequently. If floor has been unprotected during construction and an excessive amount of dirt or dust is present, additional cleaning with a light weight auto scrubber equipped with a soft nylon brush may be required. An rpm of 185 and brush pressure between 35 and 85 lbs. are recommended. See Periodic Cleaning below for details.

B) GENERAL MAINTENANCE

Typically, Summit International Recycled Rubber Flooring requires less maintenance than other types of flooring. Removing dust and dirt with a heavy-duty mop or a microfiber dust mop, then damp mopping with warm water is the preferred method. A commercial microfiber mop is recommended. Do not use a string mop. Use a two-bucket system with a neutral cleaner and change the rinse water frequently. Products containing solvents and acids will attack the composite structure of the rubber flooring and cause deterioration. Sealants, waxes, etc. can alter the surface characteristics and appearance. Summit International Flooring **does not** assume any responsibility for damages caused by chemical additives.

1. Non-Sealed Floors

Daily/Weekly Cleaning:

- Dust with a heavy-duty dust mop, or a microfiber dust mop thoroughly
- Damp mop using a microfiber mop. Use a two-bucket system with a neutral cleaner and change water frequently.
- For high traffic locations, a low rpm (185) auto-scrubber with soft nylon brush may be required. Brush pressure between 35 and 85 lbs. is recommended.
- When cleaning equipment/furnishings with disinfectant or other strong cleaners, be careful that overspray or excess cleaner does not drip onto the rubber flooring. Strong chemicals may cause the surface to deteriorate.

Periodic Cleaning:

Follow steps above for weekly cleaning; ensure to pre-treat the floor using a neutral cleaner diluted with water. Clean the floor using a low rpm (185) auto scrubber with soft nylon brush. Recommended brush pressure is between 35 and 80 lbs.

If a single disc rotary machine is used, these steps should be taken:

- Mix a neutral cleaner with water in a bucket.
- Use microfiber mop to liberally dampen floor.
- Let solution act for approximately 5 minutes.
- Use scrubber machine with soft nylon brush.
- Pick up slurry with a wet vacuum or clean mop.
- Use clear water to rinse; change rinse water frequently.
- Remove excess water for quicker drying.

SECTION VII

LOGO INFORMATION

All logos are assembled at the factory prior to being shipped to insure a precise fit has been achieved. Use care when handling logo pieces to protect from damage or loss.

- Custom logos are packaged depending on logo size.
 - a) One mat logos are usually packaged in a separate box
 - b) Larger logos are packaged on top of the pallet
 - c) Smaller pieces are always packaged separately in either a plastic bag or small box
- Use care when opening the packaging of small logo pieces as they may fall out.
- Refer to Section I, Material Storage & Handling.

LOGO INSTALLATION

1. Confirm required logo location from site drawings or by confirming with building owner.
2. Dry lay logo complete with background mat in desired location. Confirm edges of background mat are squared to ensure a tight fit of all pieces. Acclimate to surface temp.
3. Mark location on all sides to ensure correct placement during glue down.
4. Carefully remove logo and place to the side (Low tack painters tape may be used to hold pieces in place during this step, but tape must be removed immediately after logo is installed).
5. Spread adhesive in area of logo placement following installation instructions. Be extremely careful not to use too much adhesive, as it could seep through small pieces onto surface of the logo tile. **DO NOT GET GLUE ON THE TOP SIDE OF ANY LOGO PIECES.**
6. Carefully place background mat and logo pieces into place, starting with larger pieces.
7. Gently adjust pieces if necessary to ensure a good fit.
8. Extreme care should be taken when rolling logo tiles. Roll carefully and use a roller weight that is suitable for tile thickness. **4mm and 6mm tiles should be rolled with caution.**
9. Continue to install surrounding floor, being careful to protect logo from all traffic. Cover with clean drop cloth if possible until installation is complete.

These steps are given as a guideline only. Installations with multiple logos may require alternate methods. Please consult your Summit International Flooring representative if additional information is required.



One Mat Logo



Two Mat Logo

SECTION VIII

WEIGHTS & MEASURES

GENERAL PACKAGING INFORMATION

All Summit International Flooring products are packaged on wooden pallets, covered with a plastic hood, and secured by steel strapping.

Product Information - Rubber Flooring Tiles:

Thickness tolerance of ± 0.5 mm

Dimensions: 38" x 38" = 10.02 ft² (96.5 cm x 96.5 cm = 0.93 m²)

Thickness	0-29% Color		30-50% Color		51-70% Color		71-99% Color		100% Color	
	lbs. (kg) each	# Per Pallet	lbs. (kg) each	# Per Pallet	lbs. (kg) each	# Per Pallet	lbs. (kg) each	# Per Pallet	lbs. (kg) each	# Per Pallet
5/32 (4 mm)	10 (4.5)	200	10.5 (4.8)	200	11 (5)	200	13.5 (6.1)	200	15 (6.8)	200
1/4" (6mm)	16 (7.3)	150	16.5 (7.5)	150	17 (17.7)	140	18 (8.2)	130	22.5 (10.2)	110
5/16" (8mm)	20 (9)	120	21 (9.5)	110	22 (10)	110	24 (10.9)	100	28 (12.7)	90
3/8" (10mm)	23 (10.5)	100	25 (11.3)	100	27 (12)	90	30 (13.6)	80	37 (16.8)	65
1/2" (12mm)	27 (12.3)	80	29 (13.2)	80	32 (14.6)	75	36 (16.4)	65	46 (20.9)	55

Pallet (net weight) **65 lbs. (29.5 kg)**

Conversion Chart:

1 in	=	2.54 cm
1ft	=	30.5 cm
39.4 in	=	1.00 m
2.2 lbs.	=	1.0 kg

Weights and measures may change without notice. All measurements are nominal and subject to variation

One Apollo Drive
Whippany, NJ 07981
<http://www.summit-flooring.com>

Toll Free: 1-877-496-3566
Fax: (973) 301-0802
E-mail: info@summit-flooring.com